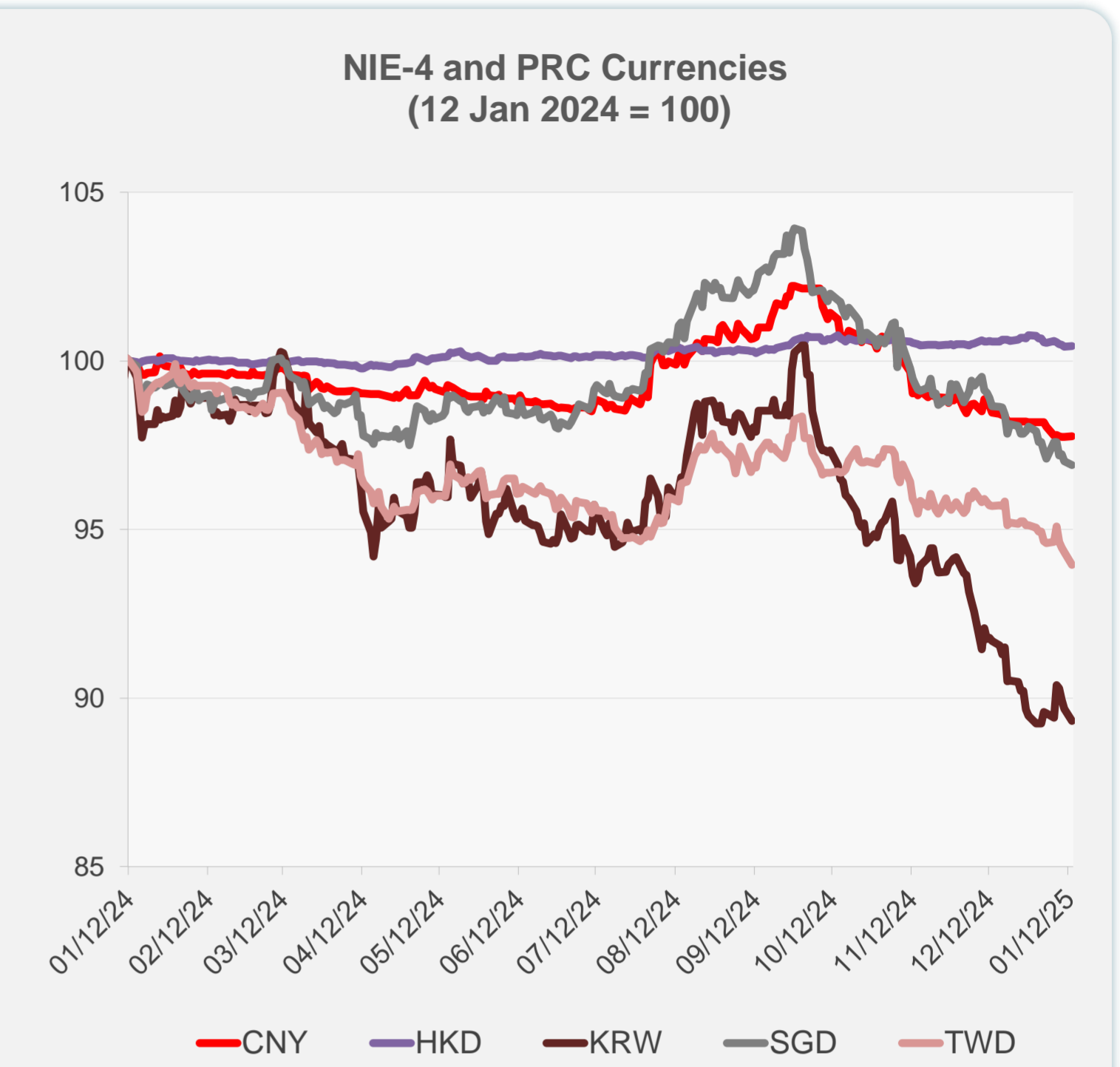
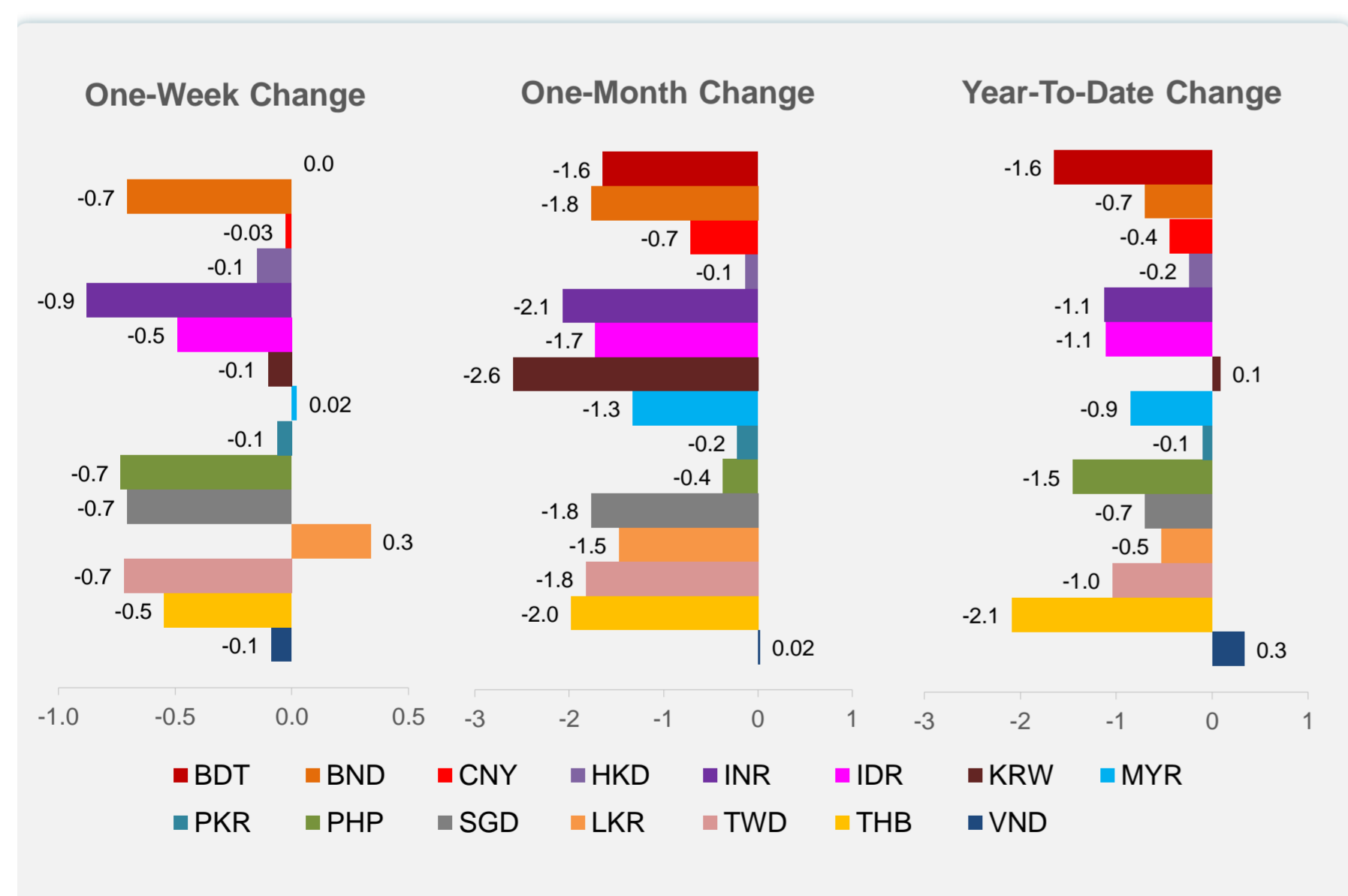
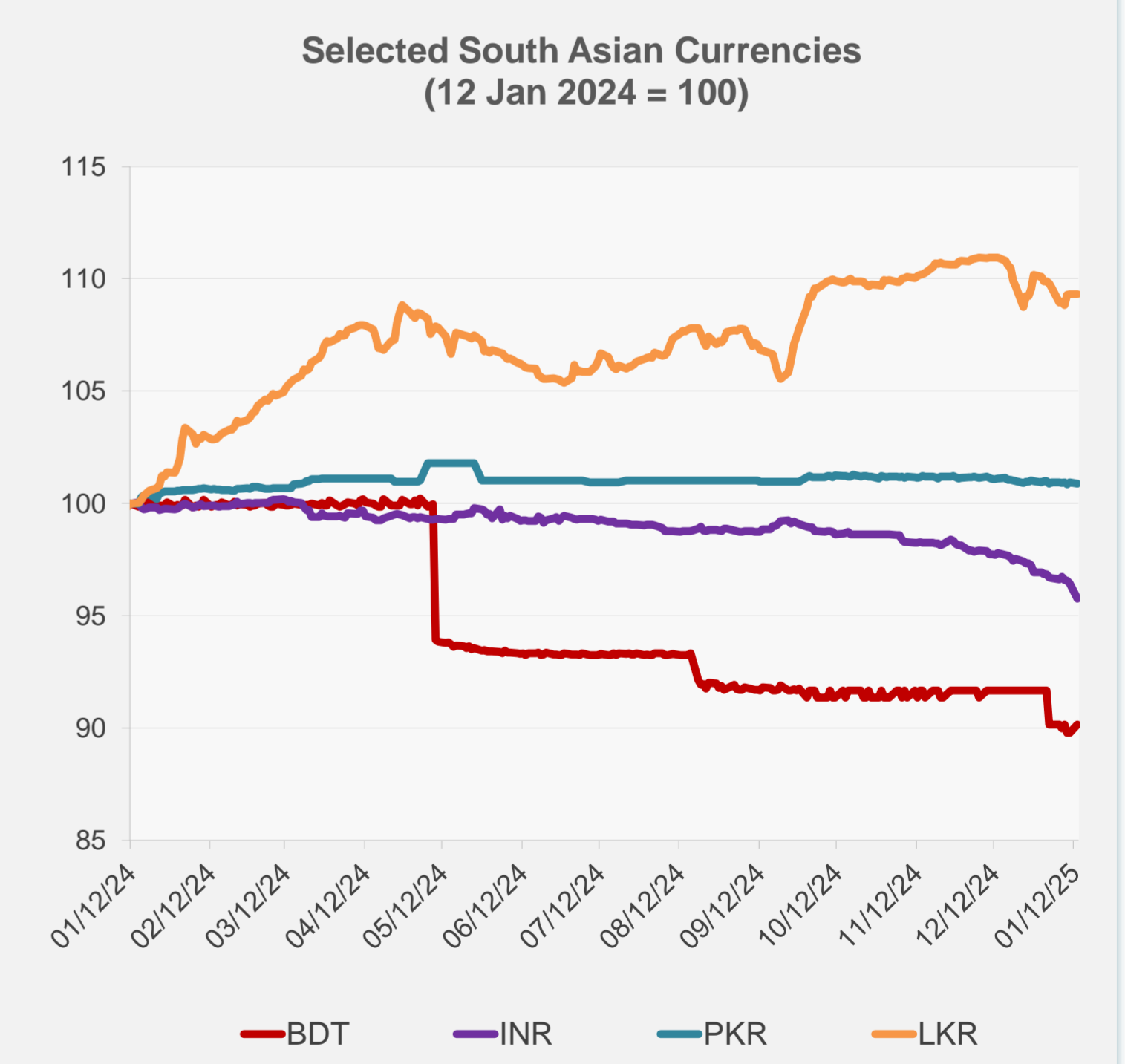
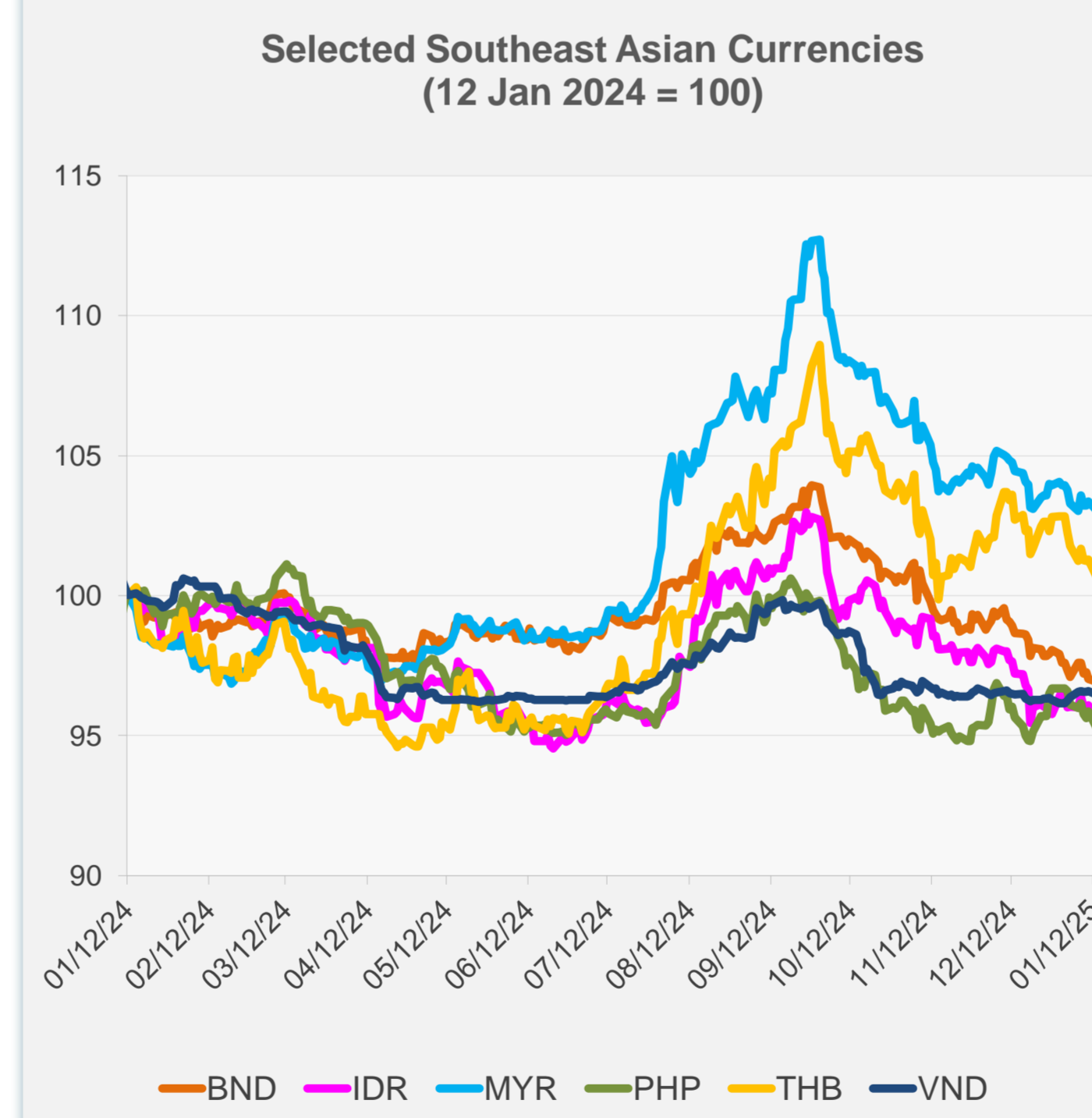


| | Latest Closing | % change from Previous Day | % change from 01-Jan-25 |
|------------------------------|----------------|----------------------------|-------------------------|
| Euro | 0.98 | -0.51 | -1.53 |
| Japanese yen (JPY) | 157.53 | 0.03 | -0.23 |
| Bangladeshi taka (BDT) | 121.50 | 0.41 | -1.65 |
| Brunei dollar (BND) | 1.37 | -0.12 | -0.70 |
| Chinese yuan (CNY) | 7.33 | 0.02 | -0.44 |
| Hong Kong dollar (HKD) | 7.79 | 0.01 | -0.24 |
| Indian rupee (INR) | 86.59 | -0.71 | -1.12 |
| Indonesian rupiah (IDR) | 16,275.00 | -0.55 | -1.11 |
| Korean won (KRW) | 1,470.90 | -0.40 | 0.08 |
| Malaysian ringgit (MYR) | 4.51 | -0.30 | -0.85 |
| Pakistan rupee (PKR) | 278.65 | -0.05 | -0.10 |
| Philippine peso (PHP) | 58.70 | -0.60 | -1.45 |
| Singapore dollar (SGD) | 1.37 | -0.12 | -0.70 |
| Sri Lanka rupee (LKR) | 294.55 | 0.00 | -0.53 |
| Taipei,China NT dollar (TWD) | 33.13 | -0.41 | -1.04 |
| Thai baht (THB) | 34.82 | -0.61 | -2.08 |
| Vietnamese dong (VND) | 25,400.00 | -0.12 | 0.33 |



NIE = Newly Industrialized Economies

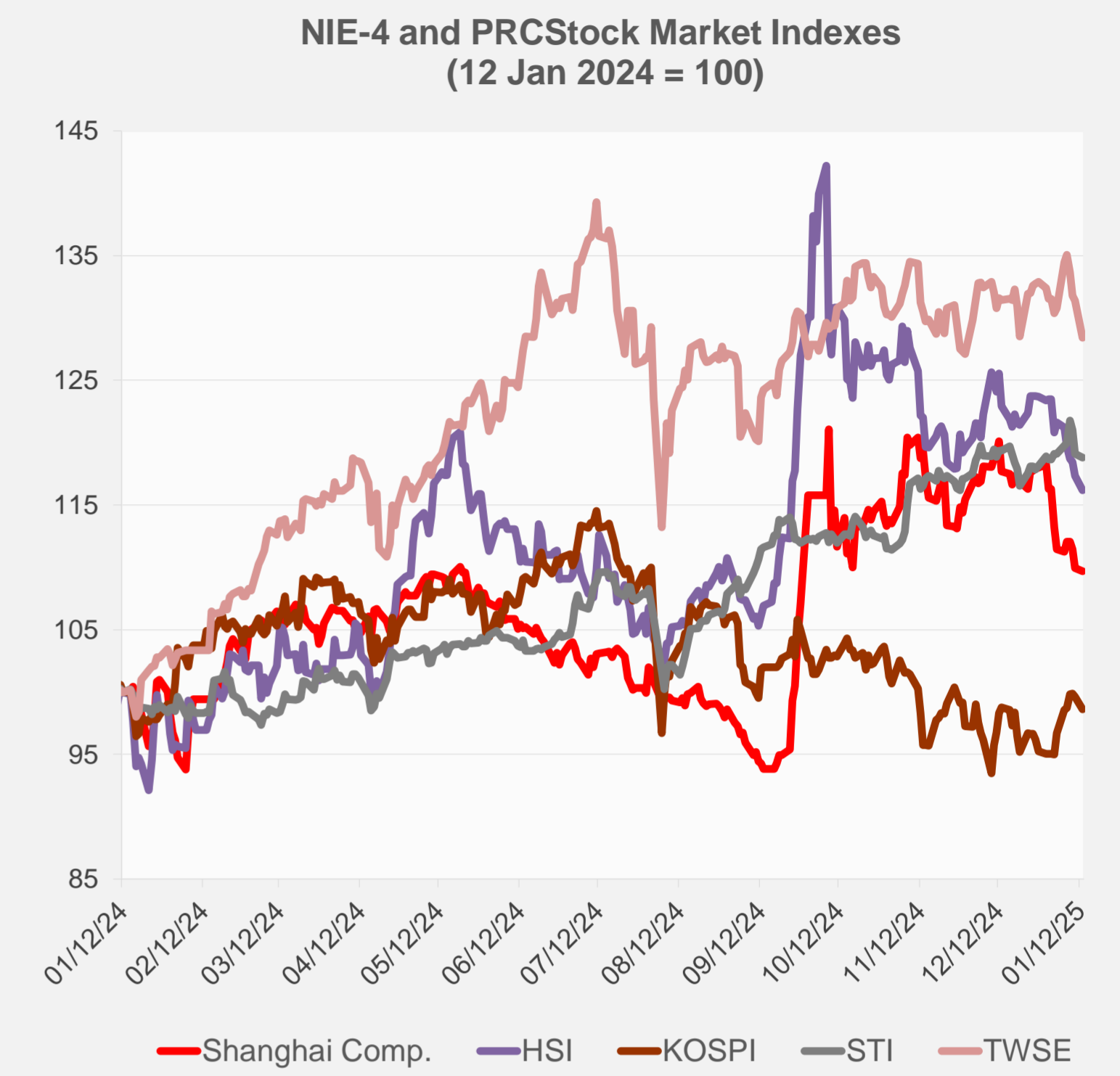
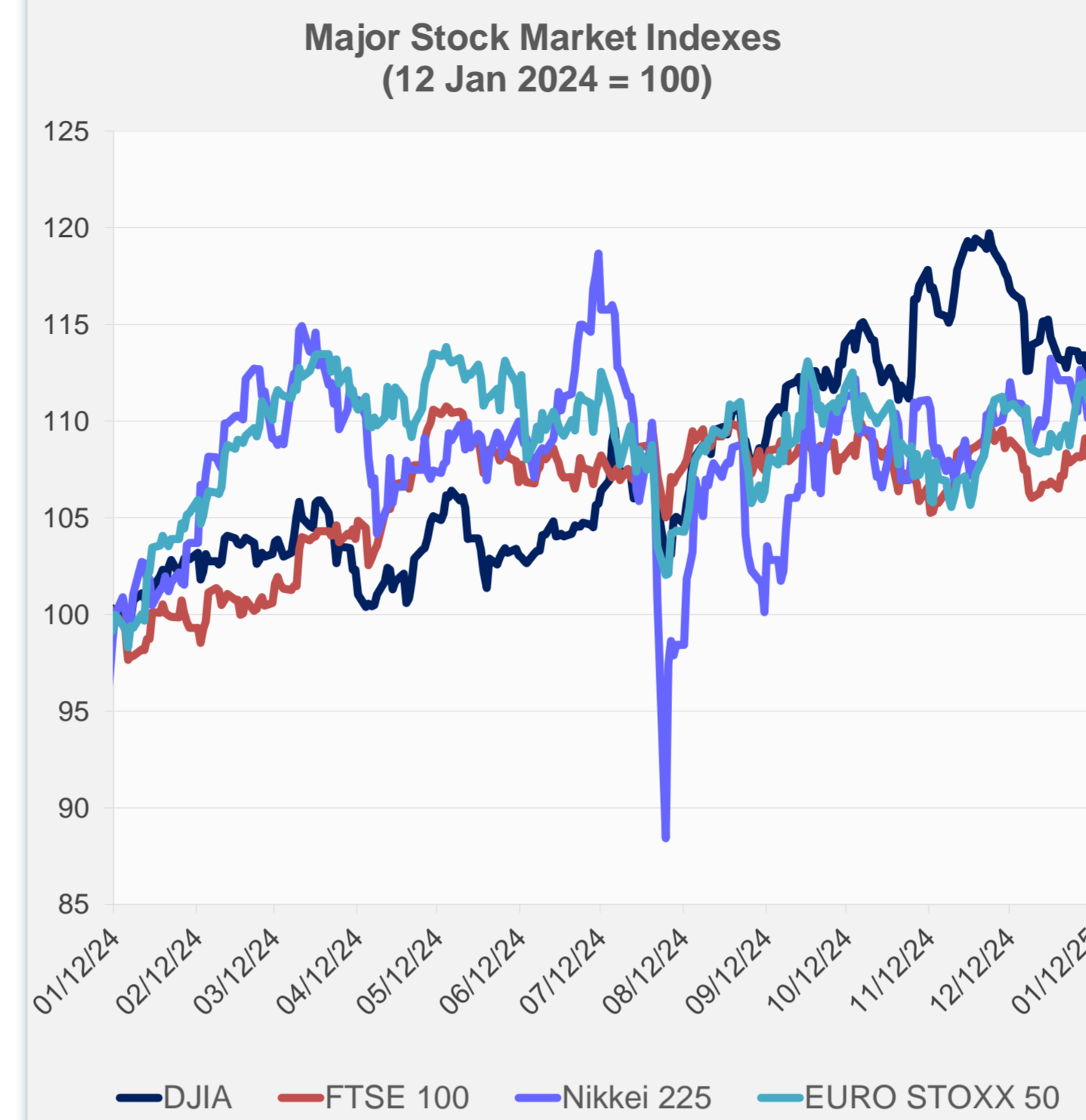


Note: Negative/Decreasing values indicate depreciation of local currency, and positive/increasing values indicate appreciation.
Source: ADB calculations using data from Haver Analytics.

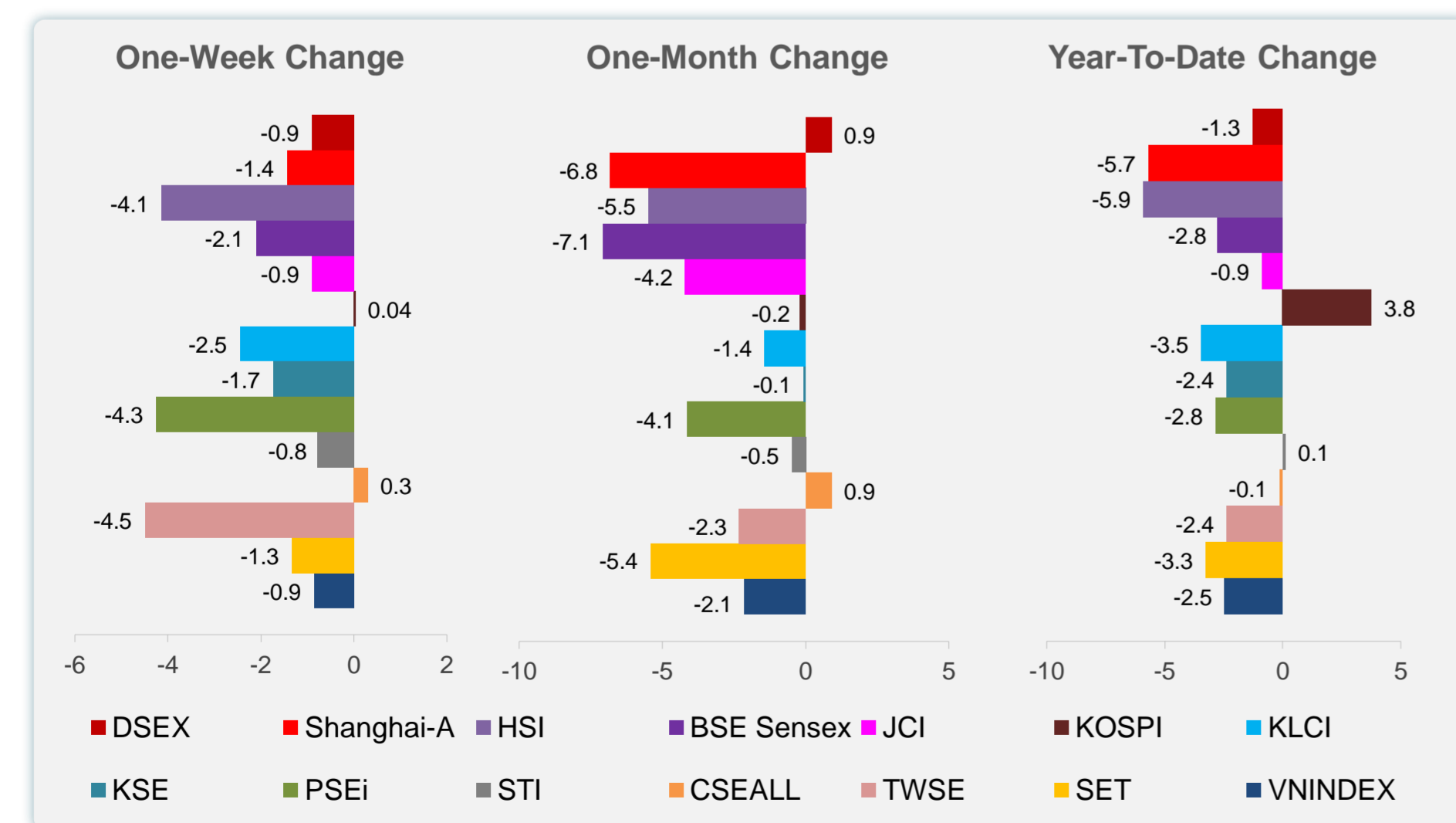
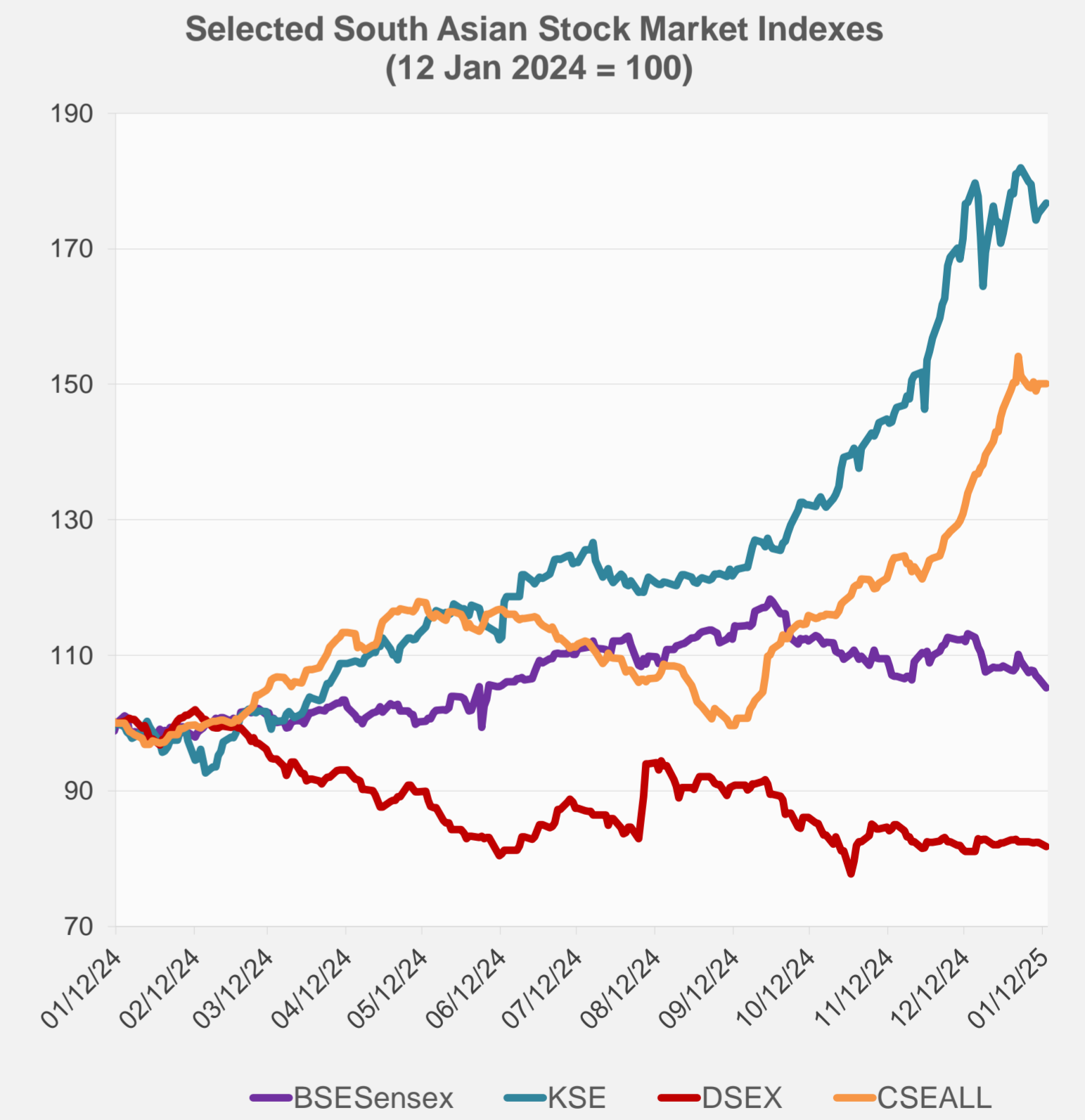
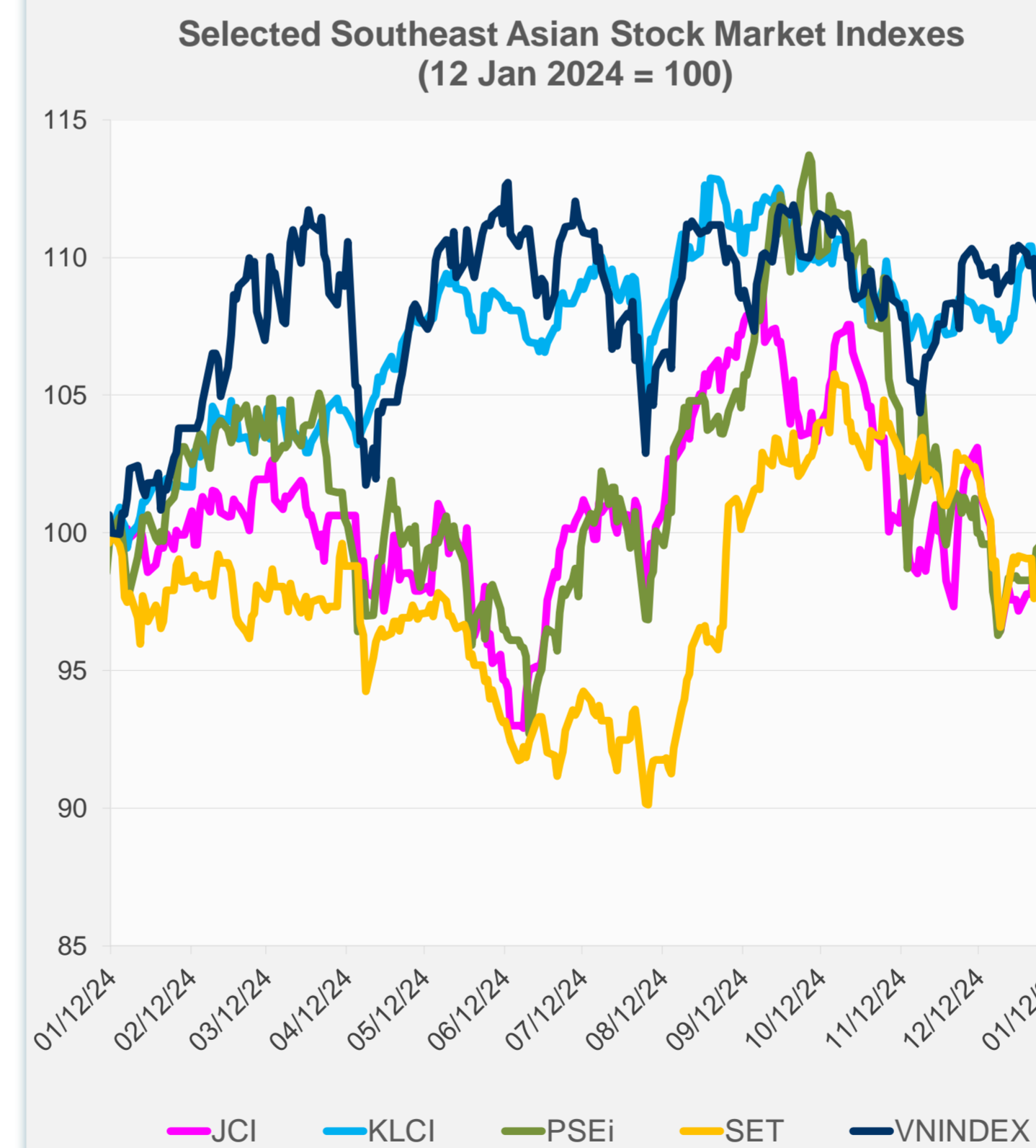


Source: Haver Analytics.

| | Latest Closing | % change from Previous Day | % change from 01-Jan-25 |
|----------------------|----------------|----------------------------|-------------------------|
| US Dow Jones Ind Avg | 42,297.12 | 0.86 | -0.58 |
| US NASDAQ | 19,088.10 | -0.38 | -1.15 |
| US S&P 500 | 5,836.22 | 0.16 | -0.77 |
| UK FTSE 100 | 8,224.19 | -0.29 | 0.63 |
| EURO STOXX 50 | 4,954.21 | -0.46 | 1.19 |
| Japan NIKKEI 225 | 39,190.40 | 0.00 | -1.77 |
| Bangladesh DSEX | 5,151.88 | -0.82 | -1.27 |
| PRC Shanghai Comp. | 3,160.76 | -0.24 | -5.70 |
| Hong Kong, China HSI | 18,874.14 | -1.00 | -5.91 |
| India BSE Sensex | 76,330.01 | -1.36 | -2.77 |
| Indonesia JCI | 7,016.88 | -1.02 | -0.89 |
| Korea, Rep. of KOSPI | 2,489.56 | -1.04 | 3.75 |
| Malaysia KLCI | 1,585.59 | -1.05 | -3.45 |
| Pakistan KSE 100 | 114,230.06 | 0.87 | -2.37 |
| Philippines PSEi | 6,343.10 | -2.36 | -2.84 |
| Singapore STI | 3,791.70 | -0.26 | 0.11 |
| Sri Lanka CSEALL | 15,926.00 | 0.00 | -0.12 |
| Taipei, China TWSE | 22,488.33 | -2.28 | -2.37 |
| Thailand SET | 1,354.34 | -1.00 | -3.28 |
| Viet Nam VNINDEX | 1,235.65 | 0.42 | -2.46 |



NIE = Newly Industrialized Economies



Sources: ADB calculations using data from CEIC Data Company and Haver Analytics.

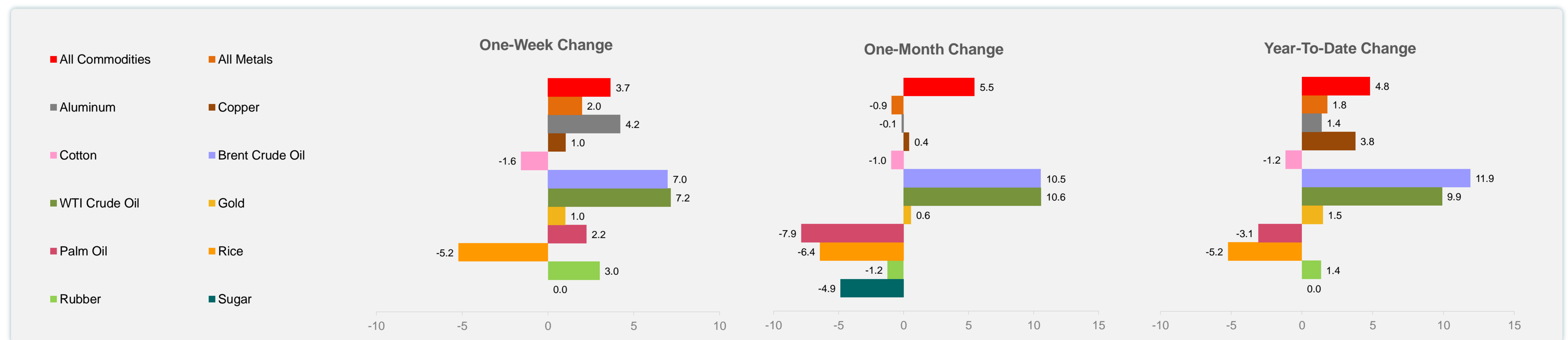
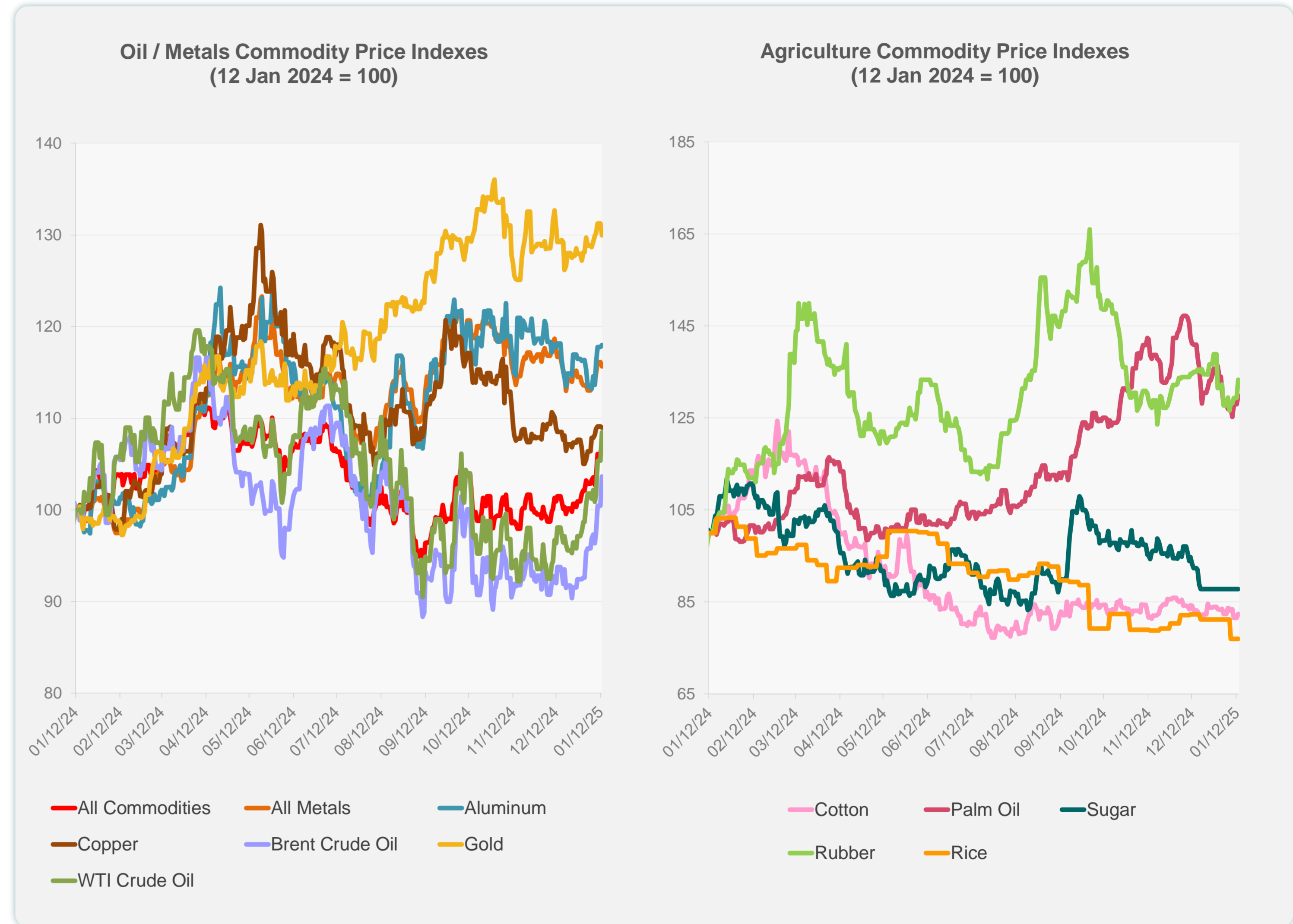


Sources: CEIC Data Company and Haver Analytics.

Daily Market Watch
COMMODITY PRICES

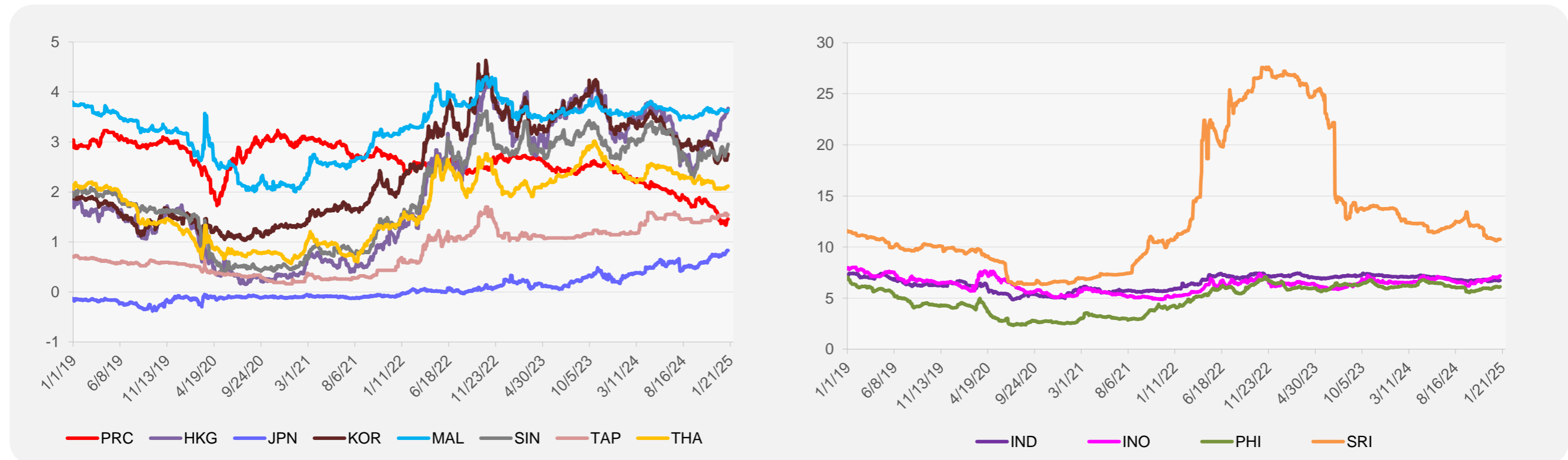
| | Unit | Latest Closing | % change from Previous Day | % change from 01-Jan-25 |
|---------------------|-------------------|----------------|----------------------------|-------------------------|
| S&P All Commodities | US\$ | 576.13 | 0.90 | 4.82 |
| S&P All Metals | US\$ | 312.91 | -0.42 | 1.80 |
| Aluminum | US\$/metric ton | 2,561.94 | 0.16 | 1.39 |
| Copper | US\$/metric ton | 8,978.84 | -0.14 | 3.77 |
| Cotton | US cents/lb | 65.14 | 0.98 | -1.15 |
| Brent Crude Oil | US\$/barrel | 82.92 | 3.19 | 11.89 |
| WTI Crude Oil | US\$/barrel | 78.82 | 2.94 | 9.90 |
| Gold | US\$/troy oz | 2,663.16 | -0.99 | 1.47 |
| Palm Oil | US\$/metric tonne | 1,066.40 | 1.47 | -3.07 |
| Rice ¹ | US\$/metric ton | 509.00 | 0.00 | -5.21 |
| Rubber ² | US\$/kg | 240.00 | 3.09 | 1.35 |
| Sugar | US cents/lb | 18.59 | 0.00 | 0.00 |

¹ Latest closing price from 8 January 2025.
² Singapore Exchange, Ribbed Smoked Sheet Rubber.

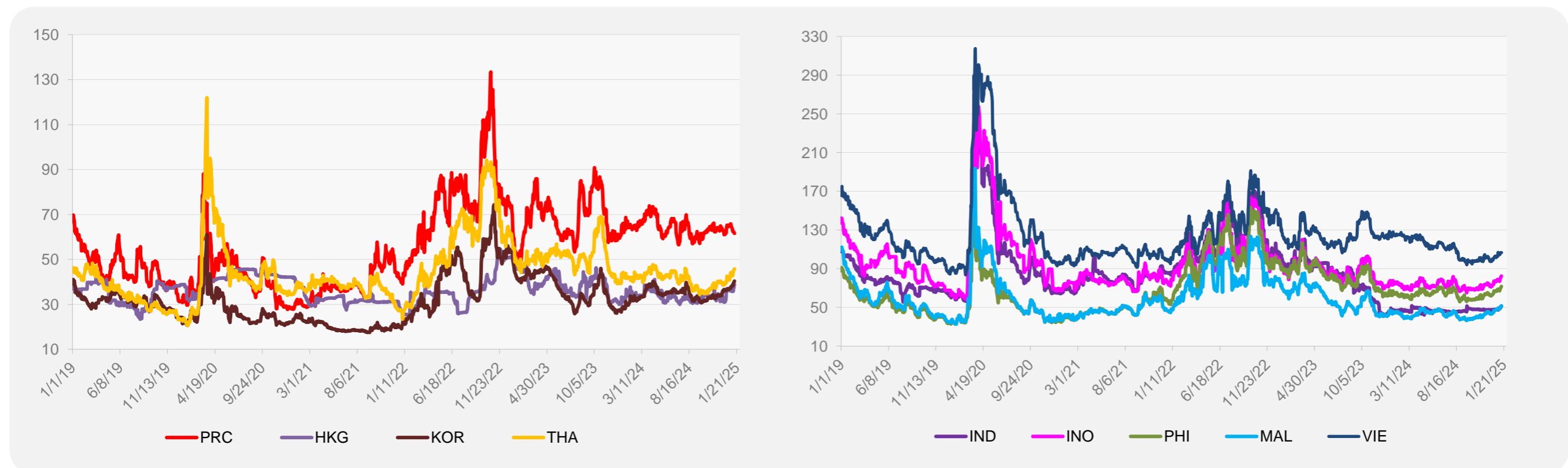


Source: ADB calculations using data from Bloomberg.

5-YEAR LOCAL CURRENCY GOVERNMENT BOND YIELDS (%)



5-YEAR CREDIT DEFAULT SWAP¹



¹ In USD and based on sovereign bonds.
Source: ADB calculations using data from Bloomberg.